

Bell Hydromatics

Gear Pumps 0P-1P-2P-3P Series

3P Series

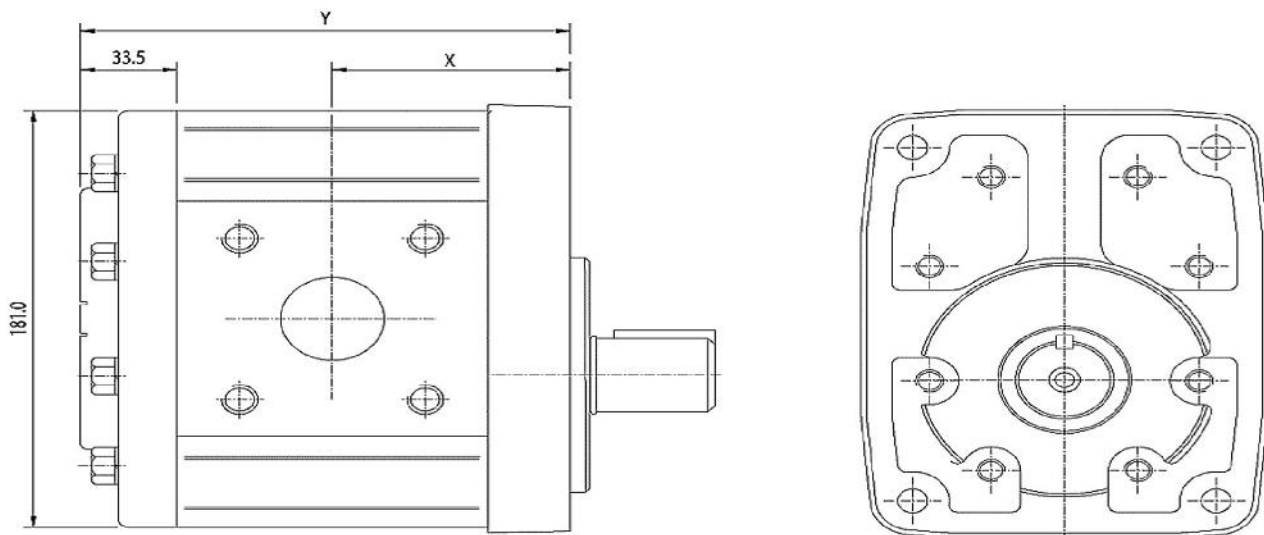


Performance Data

- Pressures quoted are relief valve maximum by-pass
- Performance with SAE 20W oil at 50°C

Pump Type	Nominal Displacement (cc/rev)	Nominal Delivery @ 1500 rpm & Pressure P (lpm)	Maximum Continuous Pressure P		Speed at Maximum Continuous Pressure P	
			psi	bar	Max.	Min.
3150	45.33	68.00	3000	207	2500	550
3180	54.33	81.50	3000	207	2500	600
3210	63.67	95.50	3000	207	2500	700
3250	75.67	113.50	3000	207	2500	700
3300	90.67	136.00	2525	174	2500	700
3330	100.00	150.00	2300	159	2500	700
3380	115.20	173.00	2000	138	2500	700
3500	151.33	227.00	1500	100	2500	700

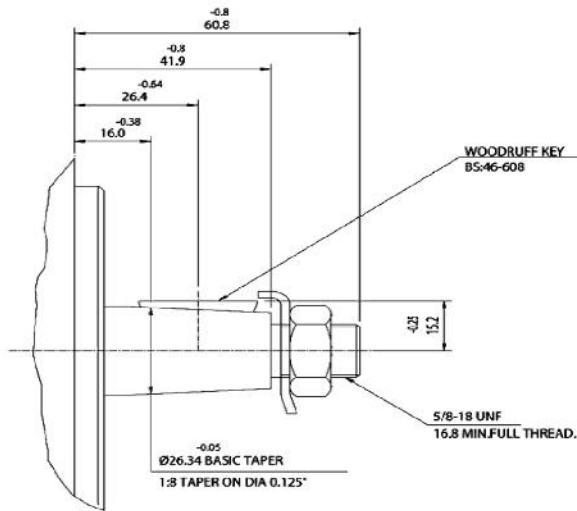
Installation Dimensions



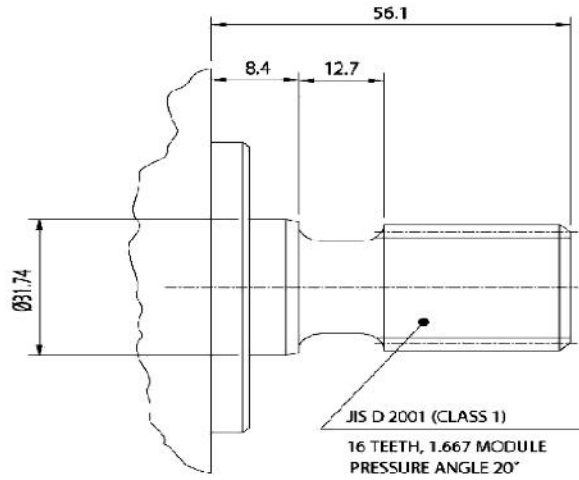
PUMP TYPE	DIMENSION-X	DIMENSION-Y
3P 3150	70.1	145.2
3P 3180	72.5	150.0
3P 3210	74.9	154.8
3P 3250	78.1	161.2
3P 3300	82.1	169.1
3P 3330	84.6	174.3
3P 3380	88.6	182.3
3P 3500	98.9	202.8

Drive Shaft

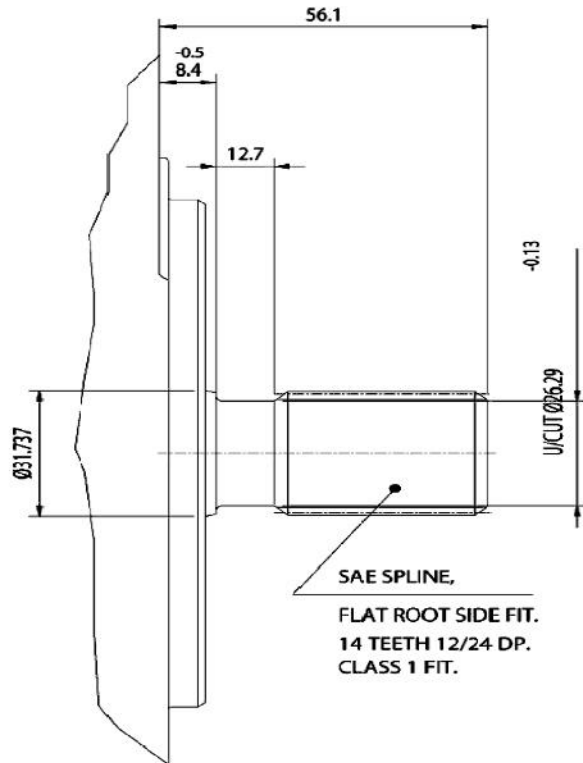
Drive Shaft: Code – T



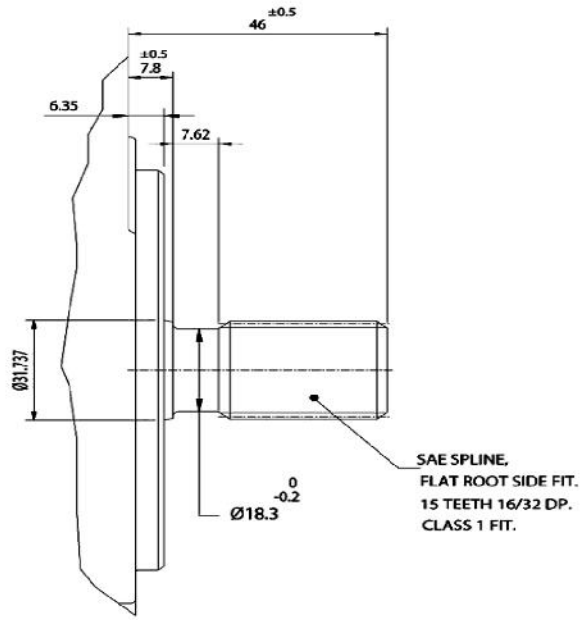
Drive Shaft: Code – J



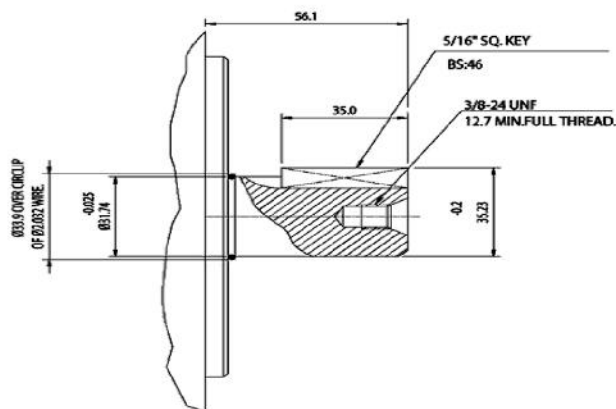
Drive Shaft: Code – S



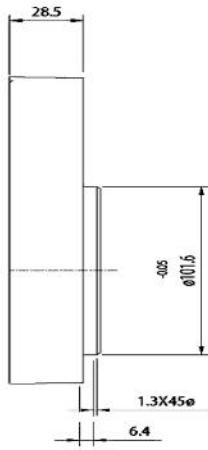
Drive Shaft: Code – B



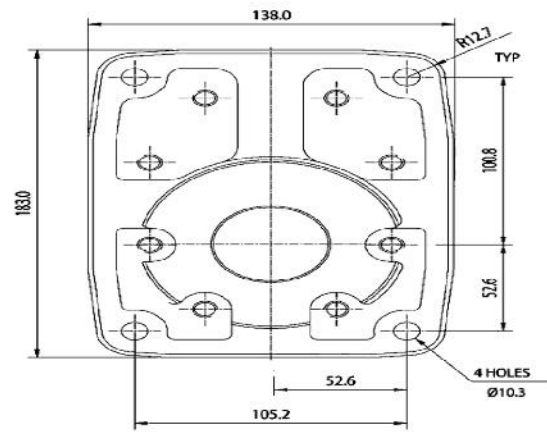
Drive Shaft: Code – P



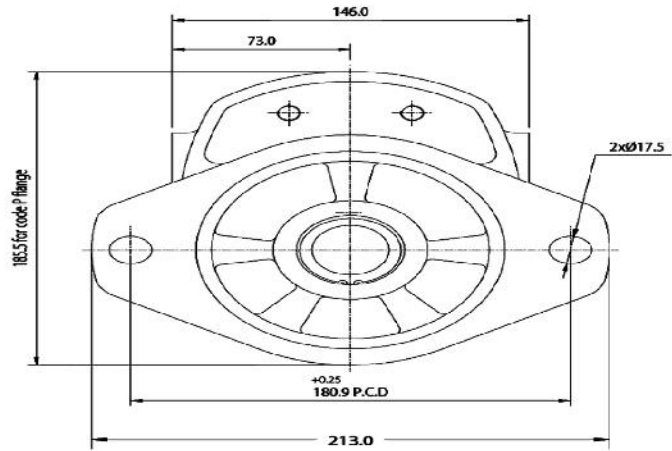
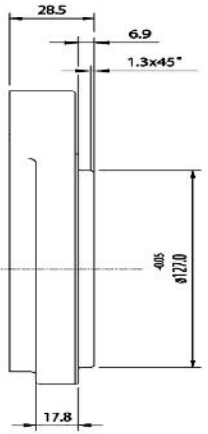
Mounting Flange



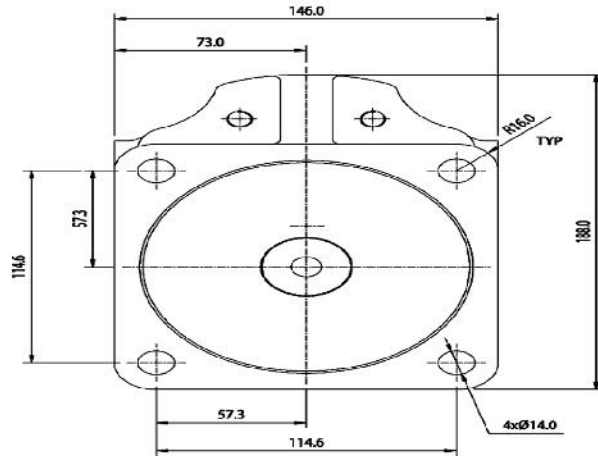
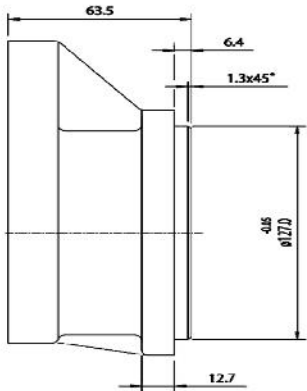
Mounting Flange: code-D



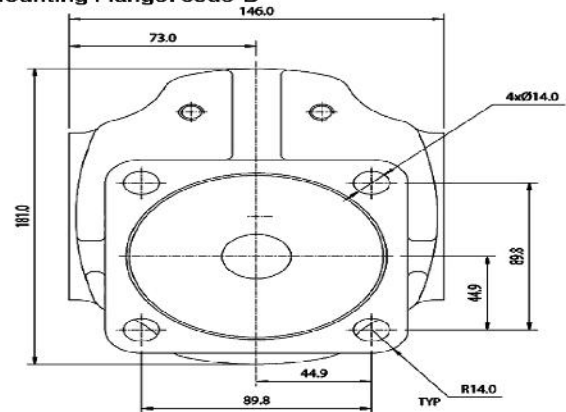
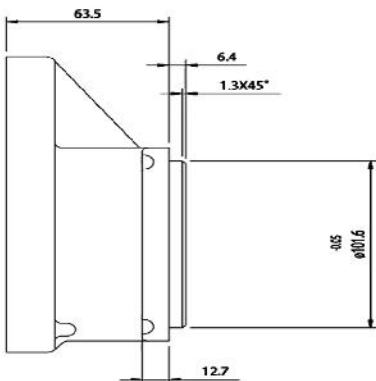
Mounting Flange: code - S



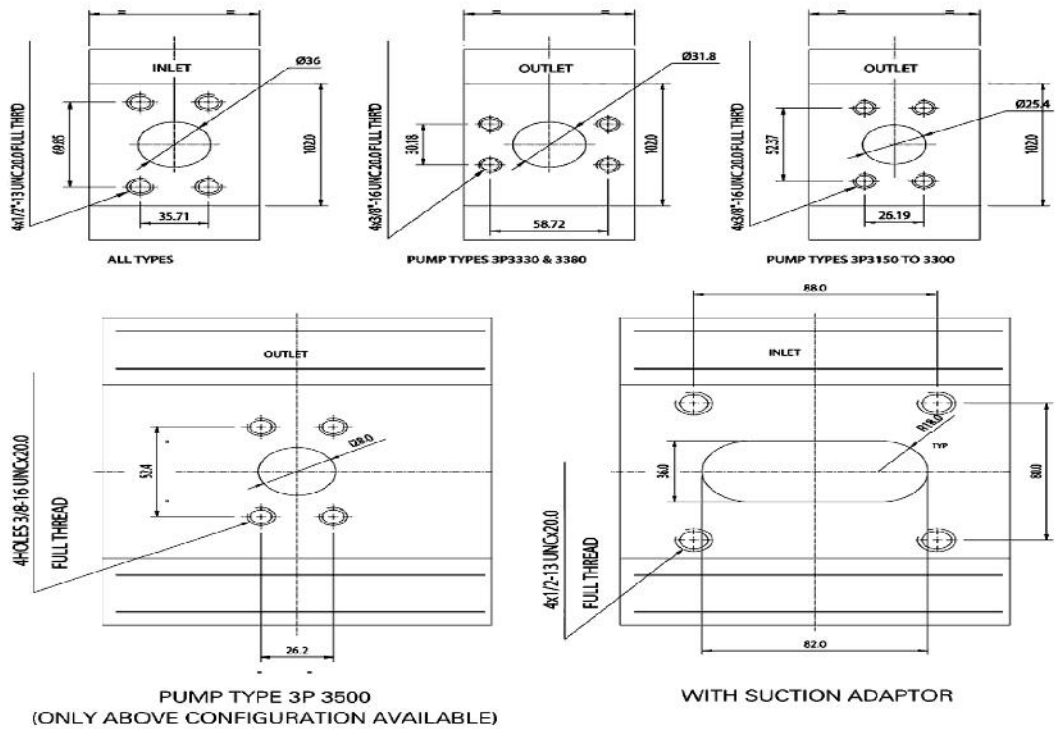
4-Bolt SAE C Mounting Flange: code-D



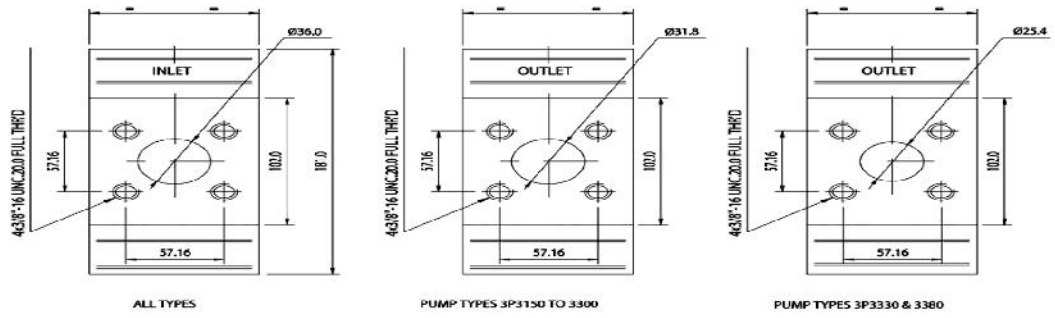
4-Bolt SAE - B Mounting Flange: code-B



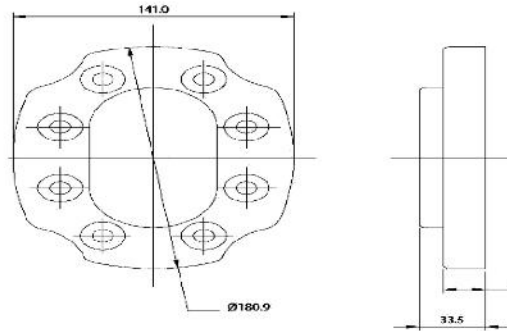
Body



Body Port: Code-F

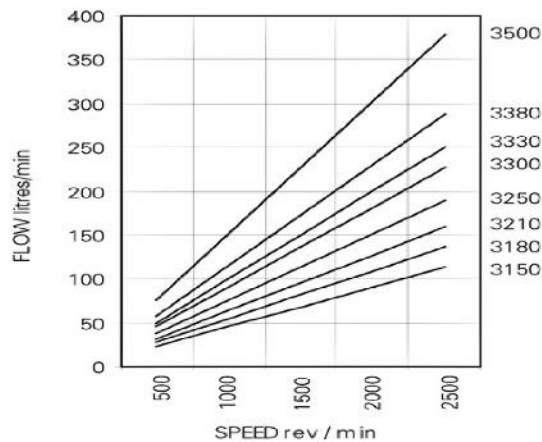


End Cover



Typical Performance

TYPICAL PUMP DELIVERY
 Flow at Max. Pressure.



TYPICAL INPUT HORSEPOWER
 Fluid SAE 20W
 Fluid Temperature 50° C

